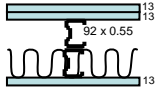


Specification

Double Steel Studs – PRS30DoA

Specification Number	Load Bearing Capability	Fire Resistance Level	Lining Requirements	Insulation	R _w	R _w + C _{tr}	Framing Size	Approximate System Weight
PRS30DoA 	NLB	-/30/30	2 layers of 13 mm thick Powerscape® Rocklining on one side and 1 layer of 13 mm thick Powerscape® Rocklining on other side	Single Layer of R 2.0 Glasswool or Polyester Blanket	62	54	92 mm deep by 0.55 mm thick or larger.	42 kg/m ²

Framing

The bottom and top tracks are fixed to the floor and ceiling in true alignment.

Stud spacing at 600 mm maximum.

Place studs to allow a 15 mm expansion gap at the top of the frame.

The studs are held in place by the "grip" of the channel runners. Light locating fasteners that fail at high temperatures, such as single aluminium rivets, may be used. Otherwise positive fixing to either channel must be avoided.

Recommended maximum height of 3000mm, higher walls are subject to specific design.

Minimum gap between frames is to be 5 mm.

Lining

A double layer of 13 mm Powerscape® Rocklining on one side and a single layer of 13 mm Powerscape® Rocklining on the other side of frame. Vertical or horizontal fixing is permitted. Sheet joints must be formed over framing or be back blocked (screwed or glued). Sheets shall be touch fitted.

Offset joints between sheets by 600 mm on opposite sides of the frame.

A 5mm gap should be left between the Rocklining and the floor. All gaps must be sealed with a fire and/or acoustic rated sealant aligned to the wall rating.

Fasteners

25 mm x 7 g scavenger head drywall high thread drywall screws at 300 mm centres for single layer side and the inner layer of 2 layer side. The outer layer of the 2 layer side shall be fixed with 40 mm x 8 g. scavenger head drywall high thread drywall screws at 300 mm centres. No fixing to top and bottom channel sections.

Services

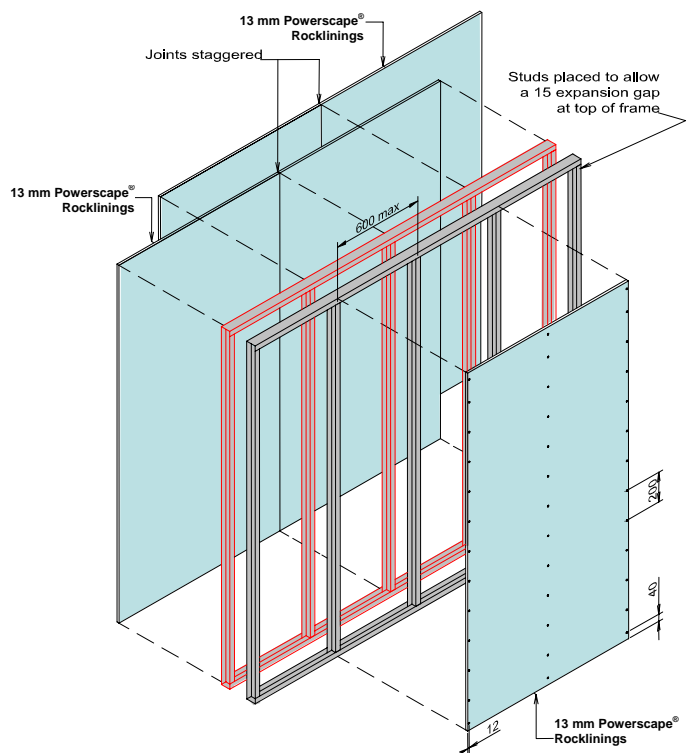
Holes may be drilled or pre-punched in the metal studs to allow installation of electrical service lines and plumbing supply pipes.

Jointing

All fastener heads stopped and all sheet joints tape reinforced and stopped in accordance with the standard procedures for plasterboard.

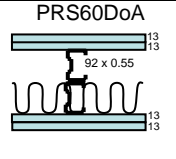
Insulation

Sound control insulation shall be a minimum of R2.0 glasswool or polyester blanket installed between the studs on one side of the frame.



Specification

Double Steel Studs – PRS60DoA

Specification Number	Load Bearing Capability	Fire Resistance Level	Lining Requirements	Insulation	R _w	R _w + C _{tr}	Framing Size	Approximate System Weight
PRS60DoA 	NLB	-/60/60	2 layers of 13 mm thick Powerscape® Rocklining on each side	Single Layer of R 2.0 Glasswool or Polyester Blanket	68	60	92 mm deep by 0.55 mm thick or larger.	55 kg/m ²

Framing

The bottom and top tracks are fixed to the floor and ceiling in true alignment.

Stud spacing at 600 mm maximum.

Place studs to allow a 15 mm expansion gap at the top of the frame.

The studs are held in place by the "grip" of the channel runners. Light locating fasteners that fail at high temperatures, such as single aluminium rivets, may be used. Otherwise positive fixing to either channel must be avoided.

Recommended maximum height of 3000mm, higher walls are subject to specific design.

Minimum gap between frames is to be 5 mm.

Lining

A double layer of 13 mm Powerscape® Rocklining on each side.

Vertical or horizontal fixing is permitted. Sheet joints must be formed over framing or be back blocked (screwed or glued). Sheets shall be touch fitted.

Offset joints between sheets by 600 mm on opposite sides of the frame.

A 5mm gap should be left between the Rocklining and the floor. All gaps must be sealed with a fire and/or acoustic rated sealant aligned to the wall rating.

Fasteners

25 mm x 7 g scavenger head drywall high thread drywall screws at 300 mm centres for single layer side and the inner layer of 2 layer side. The outer layer of the 2 layer side shall be fixed with 40 mm x 8 g. scavenger head drywall high thread drywall screws at 300 mm centres. No fixing to top and bottom channel sections.

Services

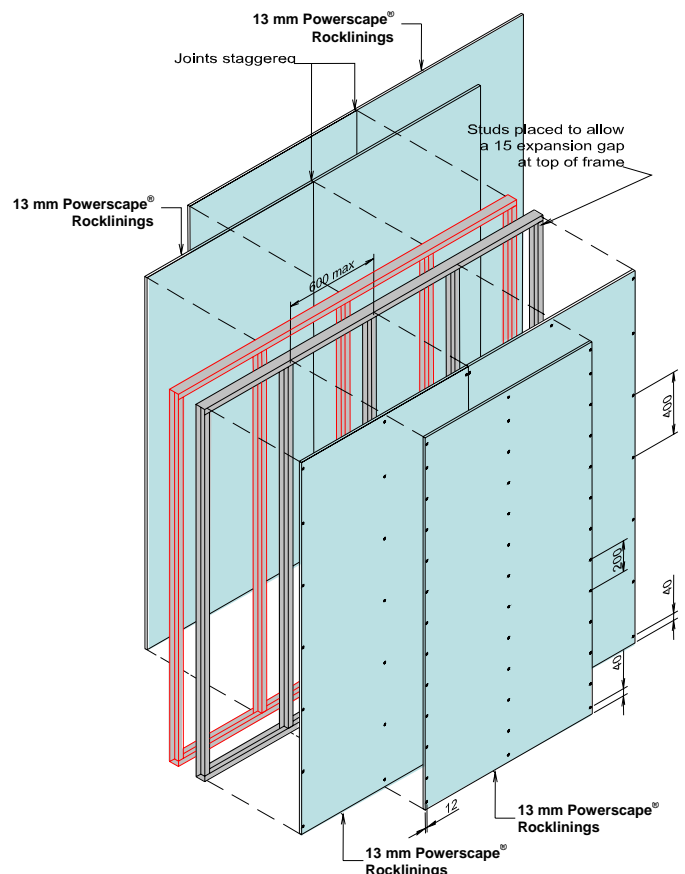
Holes may be drilled or pre-punched in the metal studs to allow installation of electrical service lines and plumbing supply pipes.

Joining

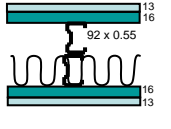
All fastener heads stopped and all sheet joints tape reinforced and stopped in accordance with the standard procedures for plasterboard.

Insulation

Sound control insulation shall be a minimum of R2.0 glasswool or polyester blanket installed between the studs on one side of the frame.



Specification Double Steel Studs – PRS90DoA

Specification Number	Load Bearing Capability	Fire Resistance Level	Lining Requirements	Insulation	R _w	R _w + C _{tr}	Framing Size	Approximate System Weight
PRS90DoA 	NLB	-/90/90	1 layer of 13 mm and 1 layer of 16 mm thick Powerscape® Rocklining on each side	Single Layer of R 2.0 Glasswool or Polyester Blanket	69	62	92 mm deep by 0.55 mm thick or larger.	59 kg/m ²

Framing

The bottom and top tracks are fixed to the floor and ceiling in true alignment.

Stud spacing at 600 mm maximum.

Place studs to allow a 15 mm expansion gap at the top of the frame.

The studs are held in place by the "grip" of the channel runners. Light locating fasteners that fail at high temperatures, such as single aluminium rivets, may be used. Otherwise positive fixing to either channel must be avoided.

Recommended maximum height of 3000mm, higher walls are subject to specific design.

Minimum gap between frames is to be 5 mm.

Lining

One layer of 13 mm and one layer of 16 mm thick Powerscape® Rocklining on each side. Vertical or horizontal fixing is permitted. Sheet joints must be formed over framing or be back blocked (screwed or glued). Sheets shall be touch fitted.

Offset joints between sheets by 600 mm on opposite sides of the frame.

A 5mm gap should be left between the Rocklining and the floor. All gaps must be sealed with a fire and/or acoustic rated sealant aligned to the wall rating.

Fasteners

25 mm x 7 g scavenger head drywall high thread drywall screws at 300 mm centres for single layer side and the inner layer of 2 layer side. The outer layer of the 2 layer side shall be fixed with 40 mm x 8 g. scavenger head drywall high thread drywall screws at 300 mm centres. No fixing to top and bottom channel sections.

Services

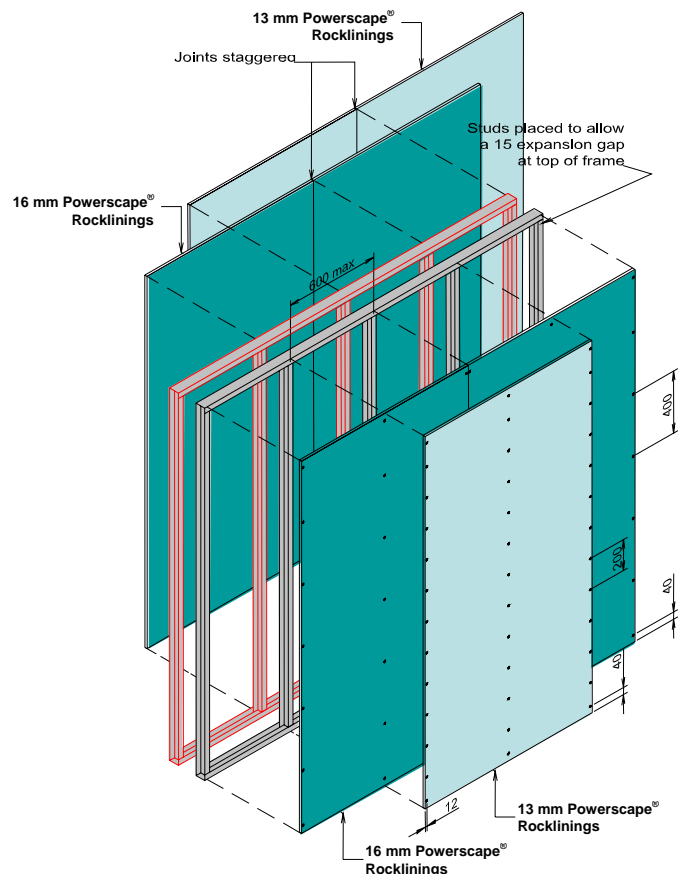
Holes may be drilled or pre-punched in the metal studs to allow installation of electrical service lines and plumbing supply pipes.

Jointing

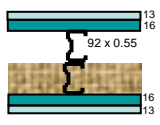
All fastener heads stopped and all sheet joints tape reinforced and stopped in accordance with the standard procedures for plasterboard.

Insulation

Sound control insulation shall be a minimum of R2.0 glasswool or polyester blanket installed between the studs on one side of the frame.



Specification Double Steel Studs – PRS90DoB

Specification Number	Load Bearing Capability	Fire Resistance Level	Lining Requirements	Insulation	R _w	R _w + C _{tr}	Framing Size	Approximate System Weight
PRS90DoB 	NLB	-/90/90	1 layer of 13 mm and 1 layer of 16 mm thick Powerscape® Rocklining on each side	63 mm thick Mineral wool with min. service temp. of 450°C	70	63	92 mm deep by 0.55 mm thick or larger.	60 kg/m ²

Framing

The bottom and top tracks are fixed to the floor and ceiling in true alignment.

Stud spacing at 600 mm maximum.

Place studs to allow a 15 mm expansion gap at the top of the frame.

The studs are held in place by the "grip" of the channel runners. Light locating fasteners that fail at high temperatures, such as single aluminium rivets, may be used. Otherwise positive fixing to either channel must be avoided.

Recommended maximum height of 3000mm, higher walls are subject to specific design.

Minimum gap between frames is to be 5 mm.

Lining

One layer of 13 mm and one layer of 16 mm thick Powerscape® Rocklinings on each side.

Vertical or horizontal fixing is permitted. Sheet joints must be formed over framing or be back blocked (screwed or glued). Sheets shall be touch fitted.

Offset joints between sheets by 600 mm on opposite sides of the frame.

A 5mm gap should be left between the Rocklining and the floor. All gaps must be sealed with a fire and/or acoustic rated sealant aligned to the wall rating.

Fasteners

25 mm x 7 g scavenger head drywall high thread drywall screws at 300 mm centres for single layer side and the inner layer of 2 layer side. The outer layer of the 2 layer side shall be fixed with 40 mm x 8 g. scavenger head drywall high thread drywall screws at 300 mm centres. No fixing to top and bottom channel sections.

Services

Holes may be drilled or pre-punched in the metal studs to allow installation of electrical service lines and plumbing supply pipes.

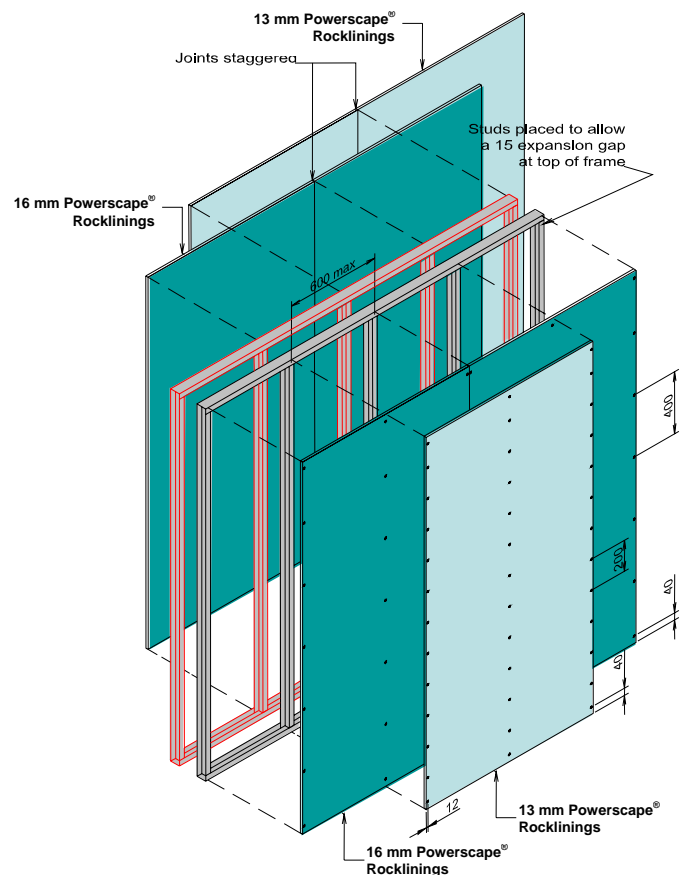
Jointing

All fastener heads stopped and all sheet joints tape reinforced and stopped in accordance with the standard procedures for plasterboard.

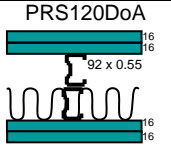
Insulation

Mineral wool with a minimum service temperature of 450°C and minimum thickness of 63 mm.

Mineral wool attached to sides of steel studs with daubs of Koagrip at 300 mm centres.



Specification Double Steel Studs – PRS120DoA

Specification Number	Load Bearing Capability	Fire Resistance Level	Lining Requirements	Insulation	R _w	R _w + C _{tr}	Framing Size	Approximate System Weight
PRS120DoA 	NLB	-/120/120	2 layers of 16 mm thick Powerscape® Rocklining on each side	Single Layer of R 2.0 Glasswool or Polyester Blanket	71	64	92 mm deep by 0.55 mm thick or larger.	63 kg/m ²

Framing

The bottom and top tracks are fixed to the floor and ceiling in true alignment.

Stud spacing at 600 mm maximum.

Place studs to allow a 15 mm expansion gap at the top of the frame.

The studs are held in place by the "grip" of the channel runners. Light locating fasteners that fail at high temperatures, such as single aluminium rivets, may be used. Otherwise positive fixing to either channel must be avoided.

Recommended maximum height of 3000mm, higher walls are subject to specific design.

Minimum gap between frames is to be 5 mm.

Lining

A double layer of 16 mm Powerscape® Rocklining on each side.

Vertical or horizontal fixing is permitted. Sheet joints must be formed over framing or be back blocked (screwed or glued). Sheets shall be touch fitted.

Offset joints between sheets by 600 mm on opposite sides of the frame.

A 5mm gap should be left between the Rocklining and the floor. All gaps must be sealed with a fire and/or acoustic rated sealant aligned to the wall rating.

Fasteners

25 mm x 7 g scavenger head drywall high thread drywall screws at 300 mm centres for single layer side and the inner layer of 2 layer side. The outer layer of the 2 layer side shall be fixed with 40 mm x 8 g. scavenger head drywall high thread drywall screws at 300 mm centres. No fixing to top and bottom channel sections.

Services

Holes may be drilled or pre-punched in the metal studs to allow installation of electrical service lines and plumbing supply pipes.

Joining

All fastener heads stopped and all sheet joints tape reinforced and stopped in accordance with the standard procedures for plasterboard.

Insulation

Sound control insulation shall be a minimum of R2.0 glasswool or polyester blanket installed between the studs on one side of the frame.

