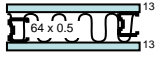


Specification

Staggered Steel Studs – PRS30StA

Specification Number	Load Bearing Capability	Fire Resistance Level	Lining Requirements	Insulation	R _w	R _w + C _{tr}	Framing Size	Approximate System Weight
PRS30StA 	NLB	-/30/30	1 layer of 13 mm thick Powerscape® Rocklining each side	Single Layer of R 2.0 Glasswool or Polyester Blanket	53	43	64 mm deep by 0.5 mm thick or larger.	28 kg/m ²

Framing

The 40 by 40 by 0.5 mm thick angle runners are fixed to the floor and ceiling in true alignment. Stud spacing at 600 mm maximum. Place studs to allow a 15 mm expansion gap at the top of the frame. The studs are held in place by the Rondo Stud/Track clip to the angle runners. Positive fixing to either channel must be avoided. Studs on each side of the partition to be offset by half the stud spacing. Recommended maximum height of 3000mm, higher walls are subject to specific design.

Lining

A single layer of 13 mm thick Powerscape® Rocklining both side of frame. Vertical or horizontal fixing is permitted. Sheet joints must be formed over framing or be back blocked (screwed or glued). Sheets shall be touch fitted.

Offset joints between sheets by 300 mm on opposite sides of the frame.

A 5mm gap should be left between the Rocklining and the floor. All gaps must be sealed with a fire and/or acoustic rated sealant aligned to the wall rating.

Fasteners

25 mm x 7 g Scavenger Head Drywall high thread drywall screws at 300 mm centres. No fixing to top and bottom channel sections.

Services

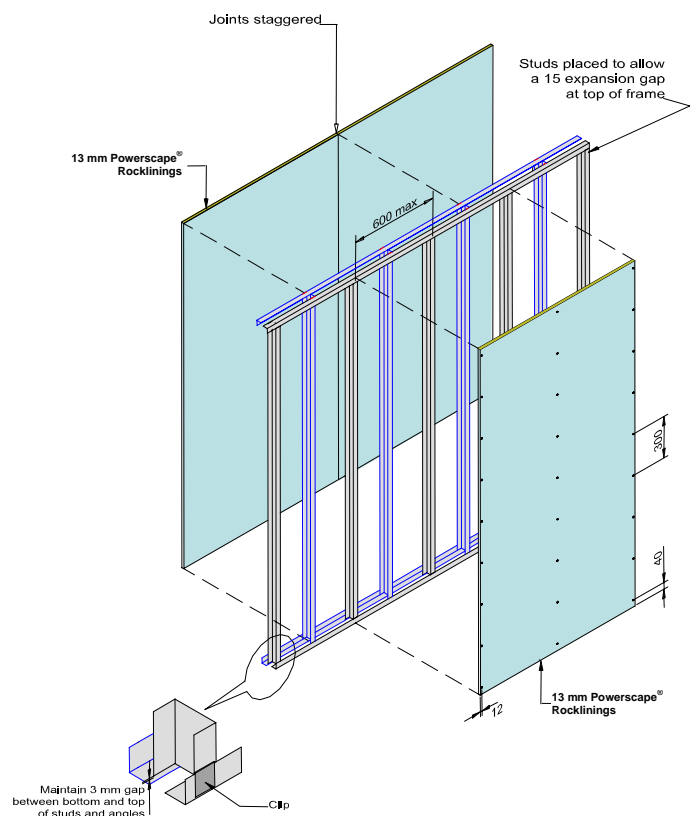
Holes may be drilled or pre-punched in the metal studs to allow installation of electrical service lines and plumbing supply pipes.

Jointing

All fastener heads stopped and all sheet joints tape reinforced and stopped in accordance with the standard procedures for plasterboard.

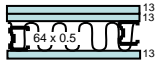
Insulation

Sound control insulation shall be a minimum of R2.0 glasswool or polyester blanket installed between the studs on one side of the frame.



Specification

Staggered Steel Studs – PRS30StB

Specification Number	Load Bearing Capability	Fire Resistance Level	Lining Requirements	Insulation	R _w	R _w + C _{tr}	Framing Size	Approximate System Weight
PRS30StB 	NLB	-/30/30	2 layers of 13 mm thick Powerscape® Rocklining on one side and 1 layer of 13 mm thick Powerscape® Rocklining on other side	Single Layer of R 2.0 Glasswool or Polyester Blanket	58	50	64 mm deep by 0.5 mm thick or larger.	42 kg/m ²

Framing

The 40 by 40 by 0.5 mm thick angle runners are fixed to the floor and ceiling in true alignment. Stud spacing at 600 mm maximum. Place studs to allow a 15 mm expansion gap at the top of the frame. The studs are held in place by the Rondo Stud/Track clip to the angle runners. Positive fixing to either channel must be avoided. Studs on each side of the partition to be offset by half the stud spacing. Recommended maximum height of 3000mm, higher walls are subject to specific design.

Lining

A double layer of 13 mm Powerscape® Rocklining on one side and a single layer of 13 mm Powerscape® Rocklining on the other side of frame. Vertical or horizontal fixing is permitted. Sheet joints must be formed over framing or be back blocked (screwed or glued). Sheets shall be touch fitted.

Offset joints between sheets by 300 mm on opposite sides of the frame.

A 5mm gap should be left between the Rocklining and the floor. All gaps must be sealed with a fire and/or acoustic rated sealant aligned to the wall rating.

Fasteners

25 mm x 7 g scavenger head drywall high thread drywall screws at 300 mm centres for single layer side and the inner layer of 2 layer side. The out layer of the 2 layer side shall be fixed with 40 mm x 8 g. scavenger head drywall high thread drywall screws at 300 mm centres. No fixing to top and bottom channel sections.

Services

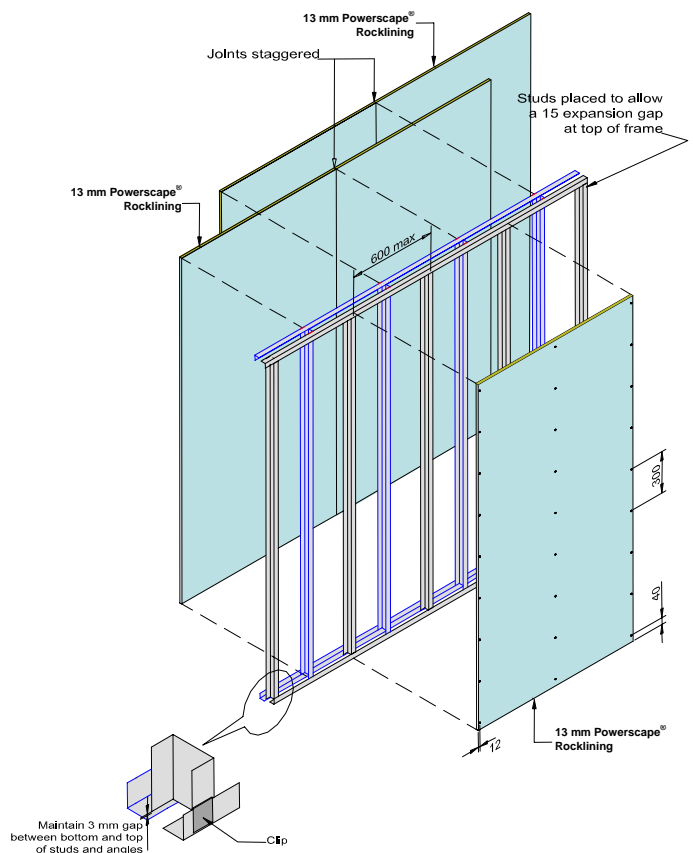
Holes may be drilled or pre-punched in the metal studs to allow installation of electrical service lines and plumbing supply pipes.

Jointing

All fastener heads stopped and all sheet joints tape reinforced and stopped in accordance with the standard procedures for plasterboard.

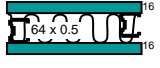
Insulation

Sound control insulation shall be a minimum of R2.0 glasswool or polyester blanket installed between the studs on one side of the frame.



Specification

Staggered Steel Studs – PRS60StA

Specification Number	Load Bearing Capability	Fire Resistance Level	Lining Requirements	Insulation	R _w	R _w + C _{tr}	Framing Size	Approximate System Weight
PRS60StA 	NLB	-/60/60	1 layer of 16 mm thick Powerscape® Rocklining each side	Single Layer of R 2.0 Glasswool or Polyester Blanket	55	45	64 mm deep by 0.5 mm thick or larger.	34 kg/m ²

Framing

The 40 by 40 by 0.5 mm thick angle runners are fixed to the floor and ceiling in true alignment. Stud spacing at 600 mm maximum. Place studs to allow a 15 mm expansion gap at the top of the frame. The studs are held in place by the Rondo Stud/Track clip to the angle runners. Positive fixing to either channel must be avoided. Studs on each side of the partition to be offset by half the stud spacing. Recommended maximum height of 3000mm, higher walls are subject to specific design.

Lining

A single layer of 16 mm thick Powerscape® Rocklining both side of frame. Vertical or horizontal fixing is permitted. Sheet joints must be formed over framing or be back blocked (screwed or glued). Sheets shall be touch fitted.

Offset joints between sheets by 300 mm on opposite sides of the frame.

A 5mm gap should be left between the Rocklining and the floor. All gaps must be sealed with a fire and/or acoustic rated sealant aligned to the wall rating.

Fasteners

25 mm x 7 g Scavenger Head Drywall high thread drywall screws at 300 mm centres. No fixing to top and bottom channel sections.

Services

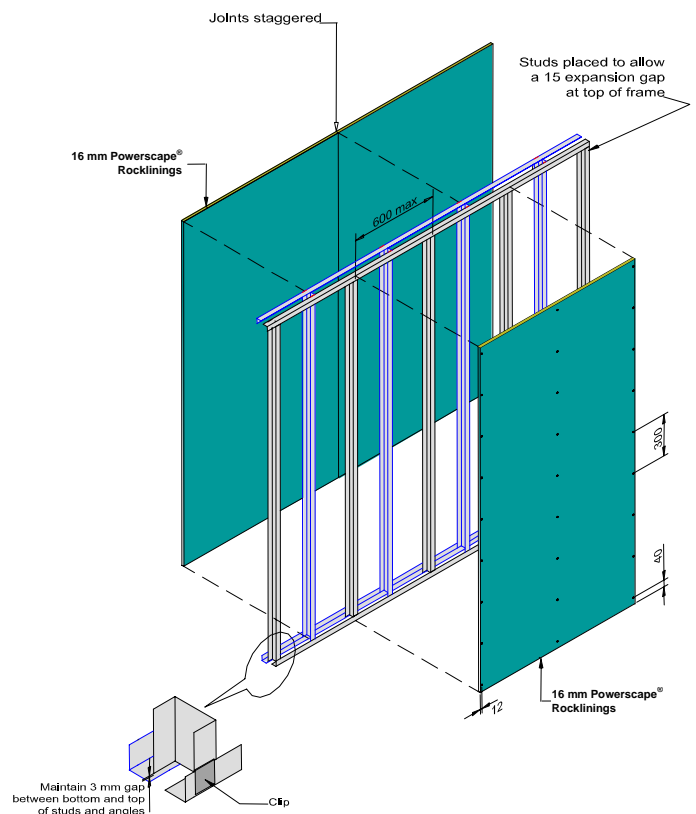
Holes may be drilled or pre-punched in the metal studs to allow installation of electrical service lines and plumbing supply pipes.

Jointing

All fastener heads stopped and all sheet joints tape reinforced and stopped in accordance with the standard procedures for plasterboard.

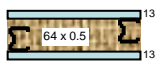
Insulation

Sound control insulation shall be a minimum of R2.0 glasswool or polyester blanket installed between the studs on one side of the frame.



Specification

Staggered Steel Studs – PRS60StB

Specification Number	Load Bearing Capability	Fire Resistance Level	Lining Requirements	Insulation	R _w	R _w + C _{tr}	Framing Size	Approximate System Weight
PRS60StB 	NLB	-/60/60	1 layer of 13 mm thick Powerscape® Rocklining each side	63 mm thick Mineral wool with min. service temp. of 450°C	53	43	64 mm deep by 0.5 mm thick or larger.	29 kg/m ²

Framing

The 40 by 40 by 0.5 mm thick angle runners are fixed to the floor and ceiling in true alignment. Stud spacing at 600 mm maximum. Place studs to allow a 15 mm expansion gap at the top of the frame. The studs are held in place by the Rondo Stud/Track clip to the angle runners. Positive fixing to either channel must be avoided. Studs on each side of the partition to be offset by half the stud spacing. Recommended maximum height of 3000mm, higher walls are subject to specific design.

Lining

A single layer of 13 mm thick Powerscape® Rocklining both side of frame. Vertical or horizontal fixing is permitted. Sheet joints must be formed over framing or be back blocked (screwed or glued). Sheets shall be touch fitted.

Offset joints between sheets by 300 mm on opposite sides of the frame.

A 5mm gap should be left between the Rocklining and the floor. All gaps must be sealed with a fire and/or acoustic rated sealant aligned to the wall rating.

Fasteners

25 mm x 7 g Scavenger Head Drywall high thread drywall screws at 300 mm centres. No fixing to top and bottom channel sections.

Services

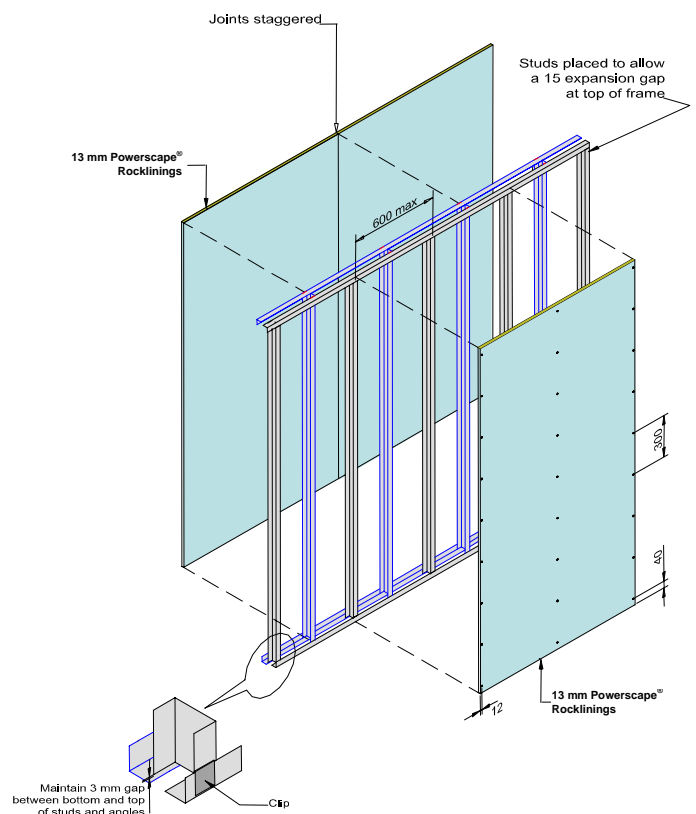
Holes may be drilled or pre-punched in the metal studs to allow installation of electrical service lines and plumbing supply pipes.

Jointing

All fastener heads stopped and all sheet joints tape reinforced and stopped in accordance with the standard procedures for plasterboard.

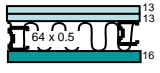
Insulation

Mineral wool with a minimum service temperature of 450°C and minimum thickness of 63 mm. Mineral wool attached to sides of steel studs with daubs of Koagrip at 300 mm centres.



Specification

Staggered Steel Studs – PRS60StC

Specification Number	Load Bearing Capability	Fire Resistance Level	Lining Requirements	Insulation	R _w	R _w + C _{tr}	Framing Size	Approximate System Weight
PRS60StC 	NLB	-/60/60	2 layers of 13 mm thick Powerscape® Rocklining on one side and 1 layer of 16 mm thick Powerscape® Rocklining on other side	Single Layer of R 2.0 Glasswool or Polyester Blanket	59	50	64 mm deep by 0.5 mm thick or larger.	44 kg/m ²

Framing

The 40 by 40 by 0.5 mm thick angle runners are fixed to the floor and ceiling in true alignment. Stud spacing at 600 mm maximum. Place studs to allow a 15 mm expansion gap at the top of the frame. The studs are held in place by the Rondo Stud/Track clip to the angle runners. Positive fixing to either channel must be avoided. Studs on each side of the partition to be offset by half the stud spacing. Recommended maximum height of 3000mm, higher walls are subject to specific design.

Lining

A double layer of 13 mm Powerscape® Rocklining on one side and a single layer of 16 mm Powerscape® Rocklining on the other side of frame. Vertical or horizontal fixing is permitted. Sheet joints must be formed over framing or be back blocked (screwed or glued). Sheets shall be touch fitted.

Offset joints between sheets by 300 mm on opposite sides of the frame.

A 5mm gap should be left between the Rocklining and the floor. All gaps must be sealed with a fire and/or acoustic rated sealant aligned to the wall rating.

Fasteners

25 mm x 7 g scavenger head drywall high thread drywall screws at 300 mm centres for single layer side and the inner layer of 2 layer side. The out layer of the 2 layer side shall be fixed with 40 mm x 8 g. scavenger head drywall high thread drywall screws at 300 mm centres. No fixing to top and bottom channel sections.

Services

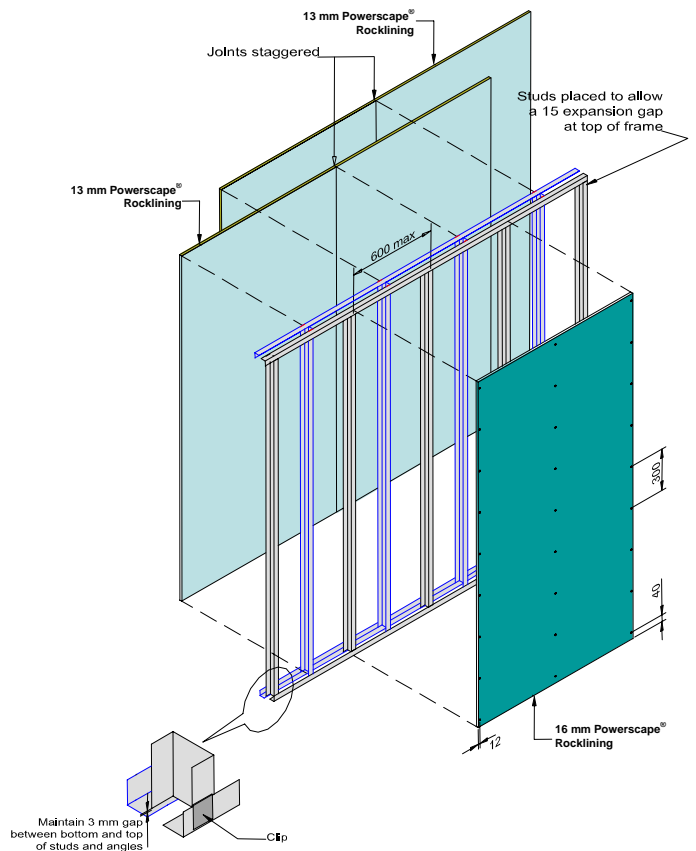
Holes may be drilled or pre-punched in the metal studs to allow installation of electrical service lines and plumbing supply pipes.

Jointing

All fastener heads stopped and all sheet joints tape reinforced and stopped in accordance with the standard procedures for plasterboard.

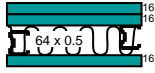
Insulation

Sound control insulation shall be a minimum of R2.0 glasswool or polyester blanket installed between the studs on one side of the frame.



Specification

Staggered Steel Studs – PRS60StD

Specification Number	Load Bearing Capability	Fire Resistance Level	Lining Requirements	Insulation	R _w	R _w + C _{tr}	Framing Size	Approximate System Weight
PRS60StD 	NLB	-/60/60	2 layers of 16 mm thick Powerscape® Rocklining on one side and 1 layer of 16 mm thick Powerscape® Rocklining on other side	Single Layer of R 2.0 Glasswool or Polyester Blanket	60	52	64 mm deep by 0.5 mm thick or larger.	49 kg/m ²

Framing

The 40 by 40 by 0.5 mm thick angle runners are fixed to the floor and ceiling in true alignment. Stud spacing at 600 mm maximum. Place studs to allow a 15 mm expansion gap at the top of the frame. The studs are held in place by the Rondo Stud/Track clip to the angle runners. Positive fixing to either channel must be avoided. Studs on each side of the partition to be offset by half the stud spacing. Recommended maximum height of 3000mm, higher walls are subject to specific design.

Lining

A double layer of 16 mm Powerscape® Rocklining on one side and a single layer of 16 mm Powerscape® Rocklining on the other side of frame. Vertical or horizontal fixing is permitted. Sheet joints must be formed over framing or be back blocked (screwed or glued). Sheets shall be touch fitted.

Offset joints between sheets by 300 mm on opposite sides of the frame.

A 5mm gap should be left between the Rocklining and the floor. All gaps must be sealed with a fire and/or acoustic rated sealant aligned to the wall rating.

Fasteners

25 mm x 7 g scavenger head drywall high thread drywall screws at 300 mm centres for single layer side and the inner layer of 2 layer side. The out layer of the 2 layer side shall be fixed with 40 mm x 8 g. scavenger head drywall high thread drywall screws at 300 mm centres. No fixing to top and bottom channel sections.

Services

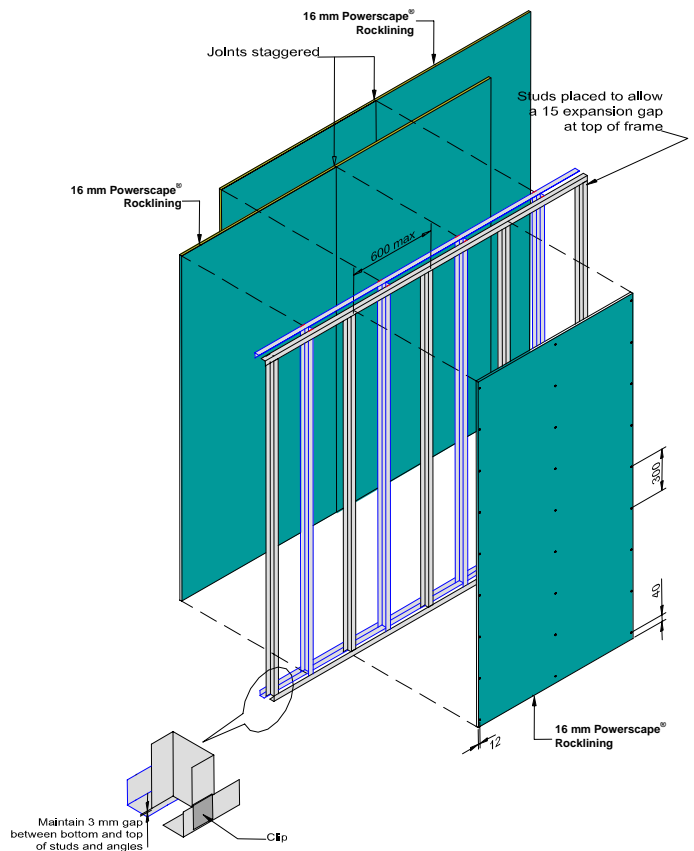
Holes may be drilled or pre-punched in the metal studs to allow installation of electrical service lines and plumbing supply pipes.

Jointing

All fastener heads stopped and all sheet joints tape reinforced and stopped in accordance with the standard procedures for plasterboard.

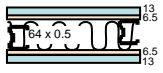
Insulation

Sound control insulation shall be a minimum of R2.0 glasswool or polyester blanket installed between the studs on one side of the frame.



Specification

Staggered Steel Studs – PRS60StF

Specification Number	Load Bearing Capability	Fire Resistance Level	Lining Requirements	Insulation	R _w	R _w + C _{tr}	Framing Size	Approximate System Weight
PRS60StF 	NLB	-/60/60	1 layer of 13 mm thick Powerscape® Rocklining and Powerscape Go-Between® on each side	Single Layer of R 2.0 Glasswool or Polyester Blanket	56	50	64 mm deep by 0.5 mm thick or larger.	42 kg/m ²

Framing

The 40 by 40 by 0.5 mm thick angle runners are fixed to the floor and ceiling in true alignment. Stud spacing at 600 mm maximum. Place studs to allow a 15 mm expansion gap at the top of the frame. The studs are held in place by the Rondo Stud/Track clip to the angle runners. Positive fixing to either channel must be avoided. Studs on each side of the partition to be offset by half the stud spacing. Recommended maximum height of 3000mm, higher walls are subject to specific design.

Lining

A single layer of 13 mm Powerscape® Rocklining and 6.5 mm Powerscape Go-Between® on each side of frame. Vertical or horizontal fixing is permitted. Sheet joints must be formed over framing or be back blocked (screwed or glued). Sheets shall be touch fitted.

Offset joints between sheets by 300 mm on opposite sides of the frame.

A 5mm gap should be left between the Rocklining and the floor. All gaps must be sealed with a fire and/or acoustic rated sealant aligned to the wall rating.

Fasteners

25 mm x 7 g scavenger head drywall high thread drywall screws at 300 mm centres for single layer side and the inner layer of 2 layer side. The out layer of the 2 layer side shall be fixed with 40 mm x 8 g. scavenger head drywall high thread drywall screws at 300 mm centres. No fixing to top and bottom channel sections.

Services

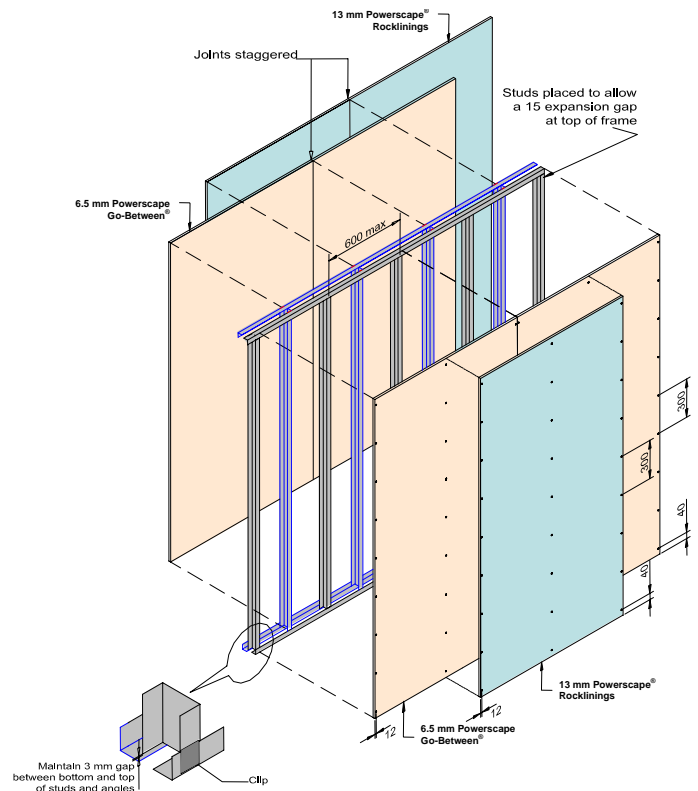
Holes may be drilled or pre-punched in the metal studs to allow installation of electrical service lines and plumbing supply pipes.

Jointing

All fastener heads stopped and all sheet joints tape reinforced and stopped in accordance with the standard procedures for plasterboard.


Insulation

Sound control insulation shall be a minimum of R2.0 glasswool or polyester blanket installed between the studs on one side of the frame.



Specification

Staggered Steel Studs – PRS90StA

Specification Number	Load Bearing Capability	Fire Resistance Level	Lining Requirements	Insulation	R _w	R _w + C _{tr}	Framing Size	Approximate System Weight
PRS90StA 	NLB	-/90/90	2 layers of 13 mm thick Powerscape® Rocklining on each side	63 mm thick Mineral wool with min. service temp. of 450°C	62	52	64 mm deep by 0.5 mm thick or larger.	55 kg/m ²

Framing

The 40 by 40 by 0.5 mm thick angle runners are fixed to the floor and ceiling in true alignment. Stud spacing at 600 mm maximum. Place studs to allow a 15 mm expansion gap at the top of the frame. The studs are held in place by the Rondo Stud/Track clip to the angle runners. Positive fixing to either channel must be avoided. Studs on each side of the partition to be offset by half the stud spacing. Recommended maximum height of 3000mm, higher walls are subject to specific design.

Lining

A double layer of 13 mm Powerscape® Rocklining on each side of frame. Vertical or horizontal fixing is permitted. Sheet joints must be formed over framing or be back blocked (screwed or glued). Sheets shall be touch fitted.

Offset joints between sheets by 300 mm on opposite sides of the frame.

A 5mm gap should be left between the Rocklining and the floor. All gaps must be sealed with a fire and/or acoustic rated sealant aligned to the wall rating.

Fasteners

25 mm x 7 g scavenger head drywall high thread drywall screws at 300 mm centres for single layer side and the inner layer of 2 layer side. The out layer of the 2 layer side shall be fixed with 40 mm x 8 g. scavenger head drywall high thread drywall screws at 300 mm centres. No fixing to top and bottom channel sections.

Services

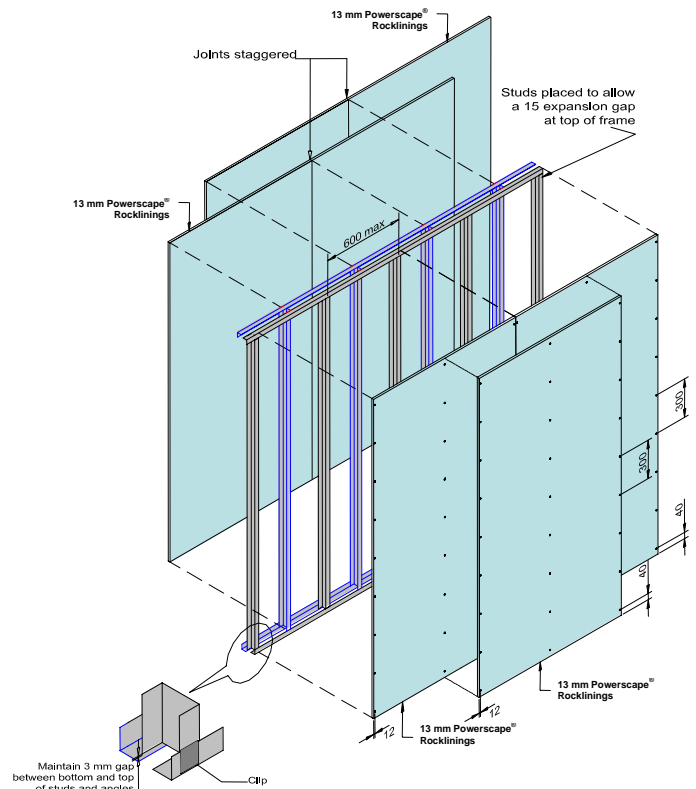
Holes may be drilled or pre-punched in the metal studs to allow installation of electrical service lines and plumbing supply pipes.

Jointing

All fastener heads stopped and all sheet joints tape reinforced and stopped in accordance with the standard procedures for plasterboard.

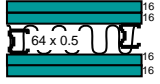
Insulation

Mineral wool with a minimum service temperature of 450°C and minimum thickness of 63 mm. Mineral wool attached to sides of steel studs with daubs of Koagrip at 300 mm centres.



Specification

Staggered Steel Studs – PRS120StA

Specification Number	Load Bearing Capability	Fire Resistance Level	Lining Requirements	Insulation	R _w	R _w + C _{tr}	Framing Size	Approximate System Weight
PRS120StA 	NLB	-/120/120	2 layers of 16 mm thick Powerscape® Rocklining on each side	Single Layer of R 2.0 Glasswool or Polyester Blanket	63	55	64 mm deep by 0.5 mm thick or larger.	63 kg/m ²

Framing

The 40 by 40 by 0.5 mm thick angle runners are fixed to the floor and ceiling in true alignment. Stud spacing at 600 mm maximum. Place studs to allow a 15 mm expansion gap at the top of the frame. The studs are held in place by the Rondo Stud/Track clip to the angle runners. Positive fixing to either channel must be avoided. Studs on each side of the partition to be offset by half the stud spacing. Recommended maximum height of 3000mm, higher walls are subject to specific design.

Lining

A double layer of 16 mm Powerscape® Rocklining on each side of frame. Vertical or horizontal fixing is permitted. Sheet joints must be formed over framing or be back blocked (screwed or glued). Sheets shall be touch fitted.

Offset joints between sheets by 300 mm on opposite sides of the frame.

A 5mm gap should be left between the Rocklining and the floor. All gaps must be sealed with a fire and/or acoustic rated sealant aligned to the wall rating.

Fasteners

25 mm x 7 g scavenger head drywall high thread drywall screws at 300 mm centres for single layer side and the inner layer of 2 layer side. The out layer of the 2 layer side shall be fixed with 40 mm x 8 g. scavenger head drywall high thread drywall screws at 300 mm centres. No fixing to top and bottom channel sections.

Services

Holes may be drilled or pre-punched in the metal studs to allow installation of electrical service lines and plumbing supply pipes.

Jointing

All fastener heads stopped and all sheet joints tape reinforced and stopped in accordance with the standard procedures for plasterboard.

Insulation

Sound control insulation shall be a minimum of R2.0 glasswool or polyester blanket installed between the studs on one side of the frame.

