

Watpac and Mewcastle back USG Powerscape Health® as a winner at the GABBA

When a local USG Powerscape® representative recently visited the site of the Brisbane Cricket Ground redevelopment, carrying a sample of a new-age wall lining material, he kicked off a chain of events that changed the way Watpac and Mewcastle manage the installation of interior wall linings.

Steve Scott of Mewcastle Pty. Ltd., says, "We asked the USG Powerscape® representative to approach the head contractor Watpac – it was not our prerogative to tell the client what to use and what not to use. He presented them with a sample. They put it through its paces and said 'Yes we'll use it.' They then instructed us to proceed with using Health®. And we found it excellent to work with."

Following extensive research, Gary Gisik, Watpac's Senior Design Manager, submitted the product to the Architect and to their client (Queensland Government Services), and convinced them of the benefits over conventional products:



- Very user friendly with minimum dust nuisance when drilling and cutting
- Far quicker installation giving a more economical installed cost



The amazing new interior wall lining that is

- Superior moisture and mould resistance
- Recessed profile to ensure uniform setting finish qualities
- Far better impact resistant qualities as well as modest acoustic advantages

Of the \$47 million project cost approximately \$1.8 million was attributable to the ceiling and partition contract.

Asked if he was happy with the decision made, Gary reflected, “we would definitely use it again, everyone is happy with it and with finishing trades progressing rapidly it paints up very well. An excellent new product all round.”

USG Powerscape Health[®] is a whole new style of wall lining, which has many benefits over ordinary plasterboard and fibre cement. It is easy to handle and fix on-site, cut edges can be tapered in seconds with a plane, and it is much easier to screw than fibre cement.



That’s the theory, but we wanted it straight from the men who work with the product, so we asked Ron Scott, Mewcastle site manager how his team found the product. “It’s all going good, we can’t fault the product. We compare it with 9mm fibre cement – which it has taken the place of here. Our biggest plus is the amount of labour we save, around 30 or 40% you know, to cut it and



Excellent edge machinability results in voids and columns installing easily.

Tapers are for wood working.

easy to cut, fix, joint and paint

screw it on. My people are telling me it is as easy, if not easier, to fix and stop than 13mm plasterboard – and I've got some pretty experienced blokes in my gang."

"And it's tough too, the boys told me they could screw it to a stud and you can't just tear it off – you've actually got to unscrew it. Once the boards are up the wall is just rock-solid. Actually, one bloke thought he'd be a bit smart and gave it a bit of good kick in. No. It nearly broke his foot".

"I've had a lot of reps knocking on my door from the competition, saying 'hey Mewcastle aren't buying any of our product' and they've all asked to come on-site to have a look at the product, and they've just got no answers for it either. They've tried to come back selling their products at fancy prices just to get their business back. But for us labour is the bulk of our costs, and if I can cut my labour down, it's a plus to us, you know?"

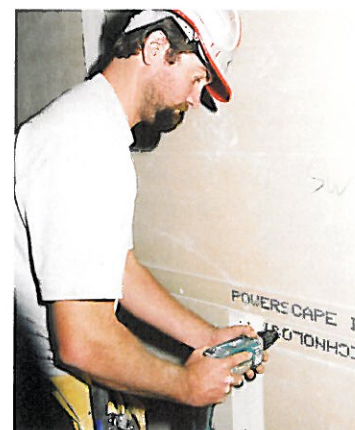
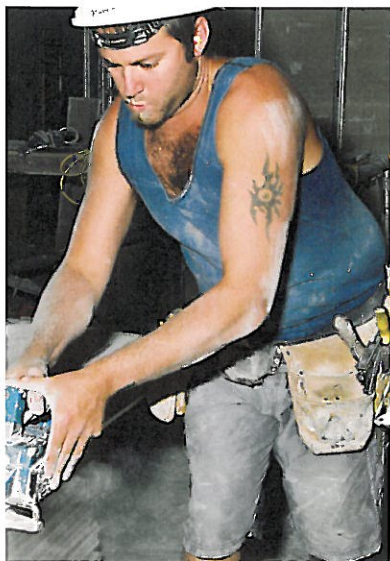
So it looks like USG Powerscape Health® has proven itself to be an all rounder at the GABBA. For many it was possibly a brave move giving it a trial, but everyone that works with it soon finds the new-age board has many benefits over anything else on the market. As Ron put it, "They're just amazed with it."



Three of the Mewcastle team, Ron, Kevin and Steve, on the GABBA project. They all rate USG Powerscape Health® as clear winners for easy cutting, fixing and jointing.



With easy sheet sizing and site taper formation various wall heights can be easily accommodated without the complexity of multiple product sheet sizes on site. Normally whole sheets are placed horizontally top and bottom, and when needed a centre ripped and tapered piece is included with all joints either factory or site tapered for strong flat jointing. Stase Georgeff from USG Powerscape® indicates that all horizontal joints are made from floor level.



USG Powerscape® wall linings are screwed to steel and timber frames, with the screws bedding easily into the surface ready for spotting. No pre-drilling necessary. No surface paper to worry about puncturing. Fixing by gas powered nail gun to timber frames is also straight forward.

The sheet ends shown have been tapered on site with a power plane so there is no need for any wide -set weak end joints.

ed by power plane, router or with hand tools on modest size projects.

USG Powerscape® wall linings can be sized either by multi-score and snap, or by using hand or powered wood working tools with dust management. The Festool dust extraction unit shown here in use at the GABBA is highly effective and totally portable.

Key Product Features – USG Powerscape Health® Interior Linings

Enhanced Aesthetics

- Stronger joints to resist unsightly cracks
- Surface and edge profiling capability for creative detailing
- Secure fixing of art and wall furniture in exactly the right place

Healthier and More Comfortable Living

- Outstanding resistance to moisture absorption and lingering dampness
- Resistant to toxic mould and mildew growth
- Reduces sound transmission for greater freedom to both make and escape noise

Eco-Prefreable

- Free from known health risks associated with formaldehyde and crystalline silica
- Certified 95% recycled content
- Reduced site waste as offcuts can be rebated and reused
- Detailed ecological and health information at: www.ecospecifier.org



USG Powerscape Health® was also used at the GABBA in these new food outlets because of its durability, resistance to mould and moisture, and fine surface finish.

Australian Distributor:

Powerscape Pty Ltd

Phone 1 800 226 215

www.powerscape.com.au

