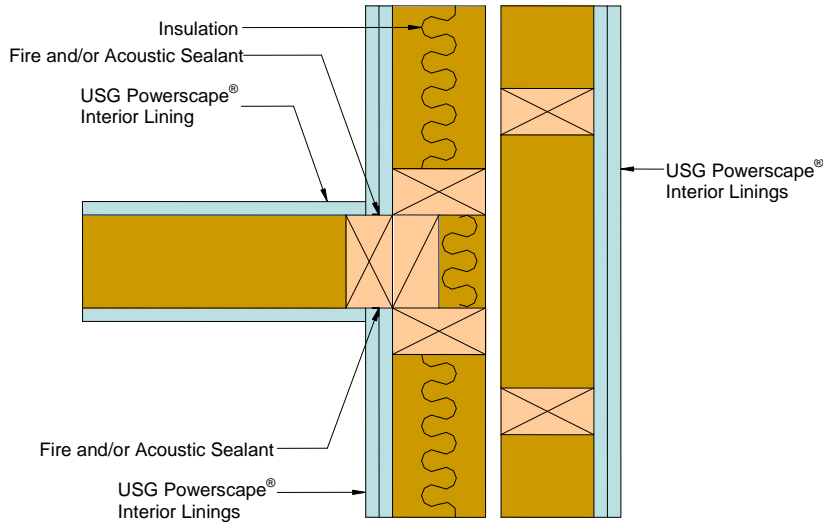


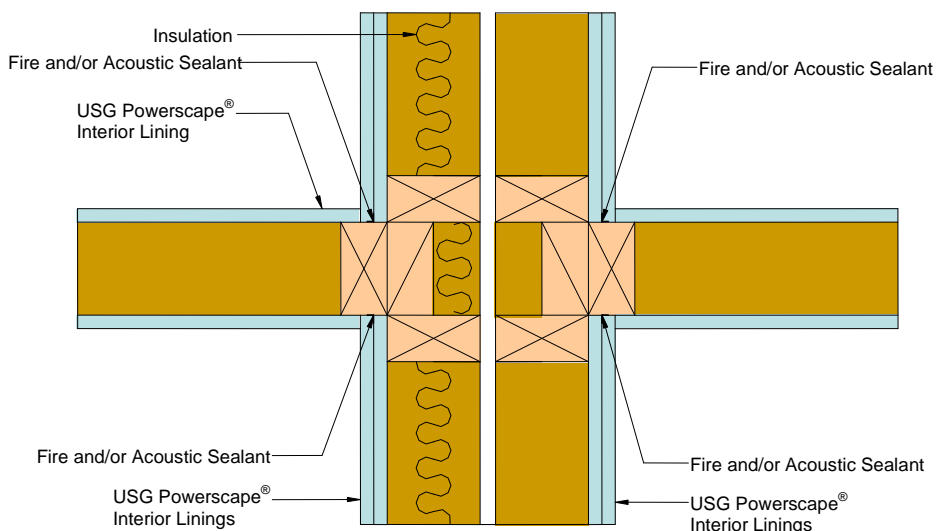
**Introduction**

When a wall intersects with an acoustically or fire wall there is the potential to degrade acoustic and fire performance of the intersecting walls. This bulletin provides construction details for both timber and steel framed USG Powerscape® Fiberrock® interior lining wall systems.

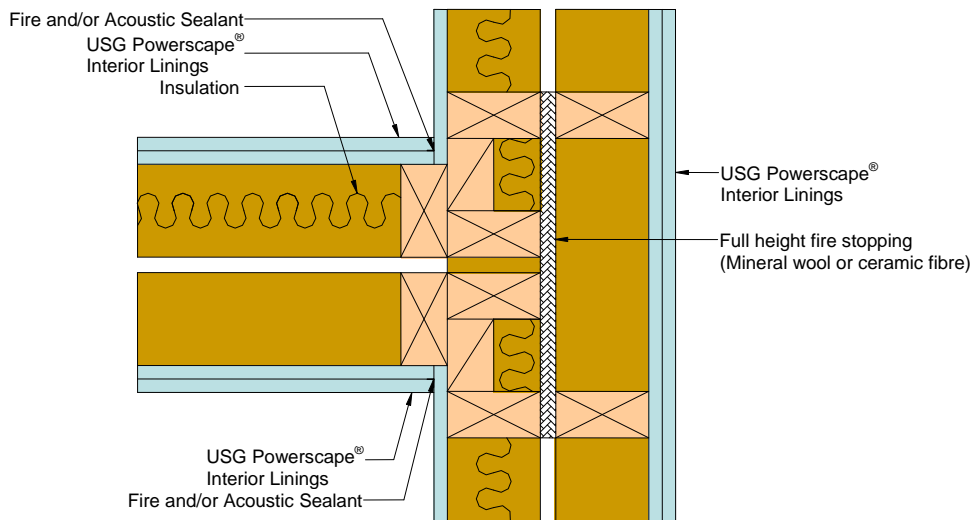
**Timber Framed**



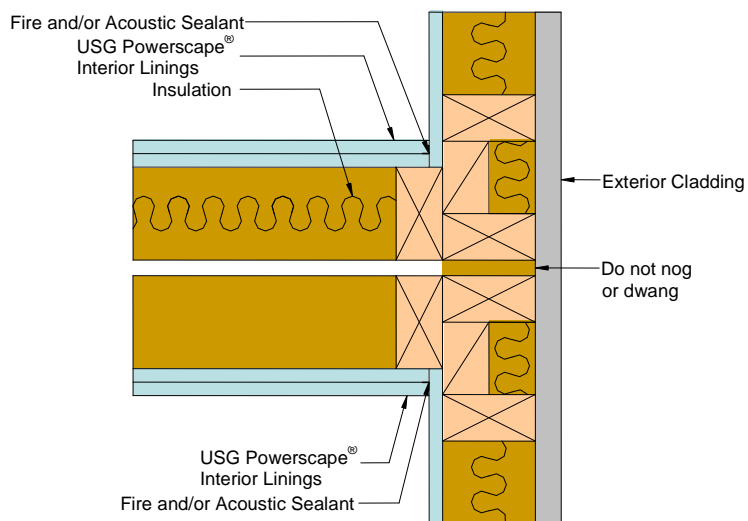
**Figure 1**  
Single Timber Framed Wall Intersecting with a Double Stud Frame Wall



**Figure 2**  
Single Timber Framed Walls Intersecting with a Double Stud Frame Wall

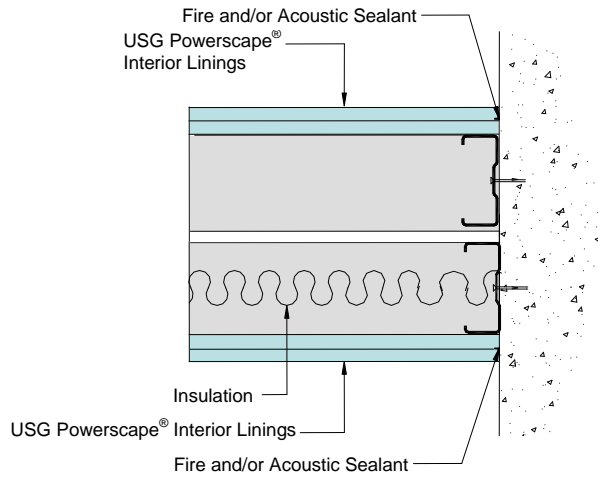


**Figure 3**  
Double Timber Framed Wall Intersecting with a Double Stud Frame Wall

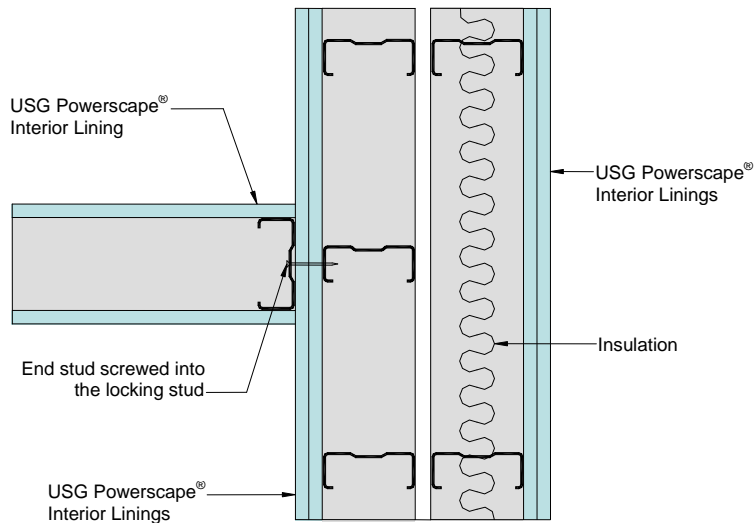


**Figure 4**  
Double Timber Framed Wall Intersecting with an External Timber Framed Wall

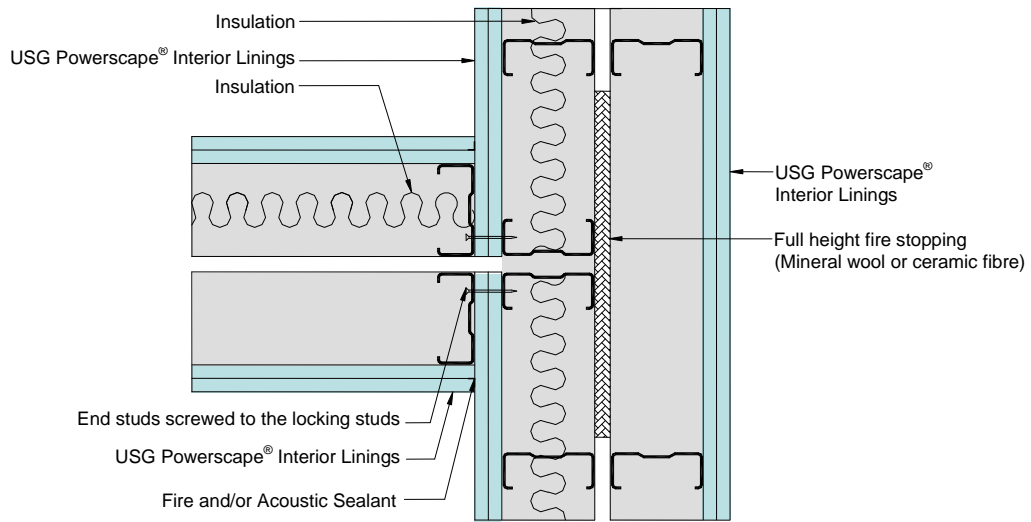
## Steel Framed Walls



**Figure 5**  
Double Steel Framed Wall Intersecting with a Concrete Wall



**Figure 6**  
Single Steel Framed Wall Intersecting with a Double Steel Stud Wall



**Figure 7**  
 Double Steel Framed Wall Intersecting with a Double Steel Stud Wall